



**Converge
Engineering**

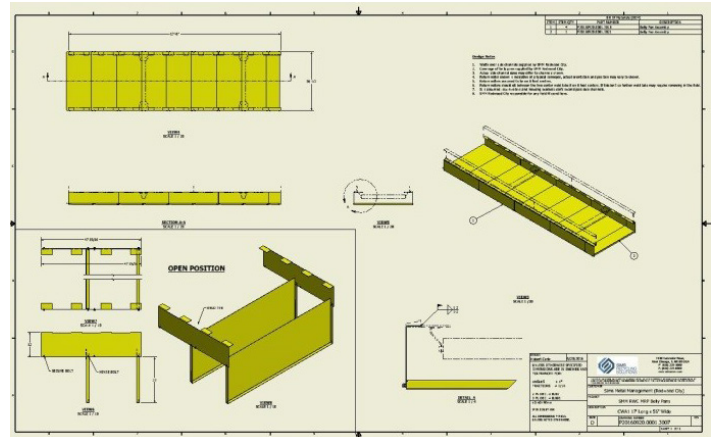
Machine Guarding

In any industrial facility, safe guarding all machinery and equipment is key to keeping everyone free from harm. And, in nearly all cases, machine guarding provisions are required by OSHA and multiple local agencies. Converge can help you evaluate and develop guarding measures to prevent accidents from occurring and meet regulatory requirements such as:

- pinch point guarding
- covers
- e-stops
- captive key interlocks
- fire safety and detectors



Accidents can happen at any time - the best way to prevent an accident is to take the necessary precautions. We can design and fabricate exact custom made guarding per your specifications. We also can build them in stainless steel, mild steel, expanded metal, and aluminum.



Custom made aluminum hinged belly pans for conveyors

Converge Engineering has years of real world operational experience with shredding, bulk handling, and separation equipment and the knowhow to apply practical guarding that does the job and is maintenance friendly.

Often times, a new piece of equipment may even be shipped from the manufacturer and not meet guarding standards, or require more than the bare minimum to operate safely in the particular application. We can offer consultations and on site audits to help highlight potential hazards and offer remedies that either your own staff, ours, or others can implement.

To learn more about how to keep your employees safe from processing equipment, contact us today at info@ConvergeEngineering.com.